



• NR330A-IP4



Quick Installation Guide

GbE iSCSI to SATA II/III Chassis

First Edition, October 2011

NR330A-IP4 GbE iSCSI to SATA II/III Chassis

1. Overview

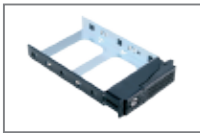
Netstor's GbE iSCSI enclosure uses Intel IOP 341, 64-bit Xscale processor as the core engine that delivers highest performance while running with quad Gigabit iSCSI channels and supports hardware RAID levels of RAID 0, 1, 0+1, 3, 5, 6, 10, 30, 50, 60 & JBOD with a wide range of RAID function selection for data protection.

2. Package Checklist

Before installing this unit, verify that package contains the following items.



A Enclosure x 1



B HDD tray (installed on enclosure) x 16



C Power cord x 2



D Hard drive mounting screw package x 1



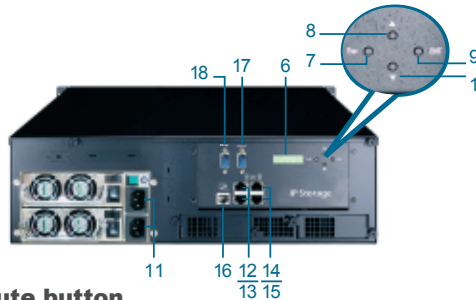
E Key for HDD tray x 2



F CD user's manual x 1

Notify your sales representative if any of the above items is missing or damaged.

3. Panel Layout



1. Mute button

- Reset for buzzer beeping

2. Status LED

- Normal – green; failure – red (Fan fails, over-temperature occurs, or HDD/power supply failure)

3. Access LED

- HDD no access – no light; HDD accessing – flashing green

4. HDD power LED

- white – power on indicator

5. HDD status LED

- flashing blue – busy (HDD accessing) indicator

6. LCD (liquid crystal display)

7. ESC (Escape) (control panel button)

8. ▲ (Up) (control panel button)

9. ENT (Enter) (control panel button)

10. ▼ (Down) (control panel button)

11. Power cord receptacles

12. GbE 1

13. GbE 2

14. GbE 3

15. GbE 4

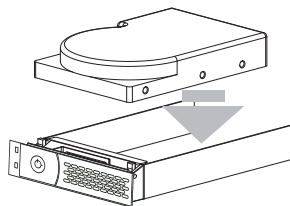
16. RJ45 Ethernet port for management

17. Console

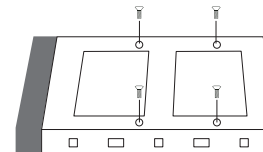
18. RS-232 for connection UPS

4. Disk Installation

Install each hard drive into the drive trays and fasten using the supplied HDD screws.

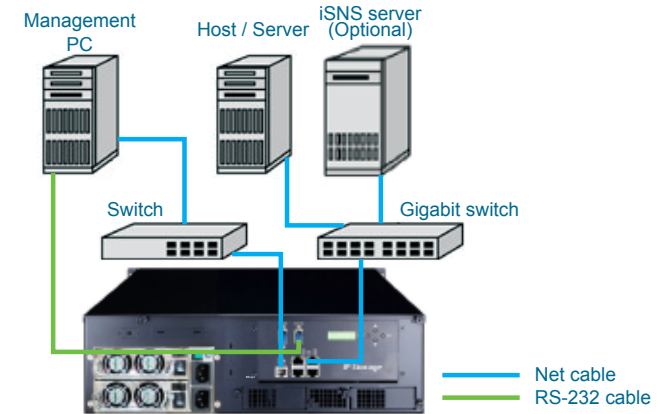


Step 1



Step 2

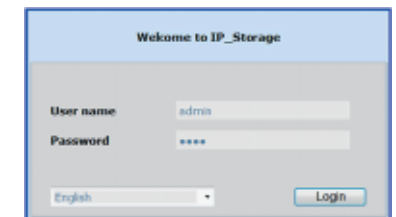
5. Product Connection



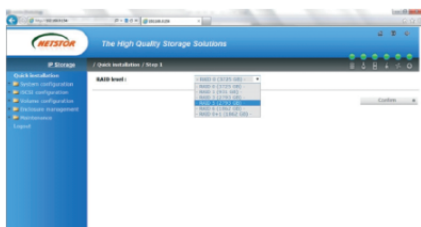
1. Connect one end of the Gigabit Ethernet cable to GbE 1, GbE 2, GbE 3, and GbE 4 on rear of the NR330A-IP4 enclosure, and the other end of the Gigabit Ethernet cable to the GbE ports on GbE switch.
2. Connect one end of the Ethernet cable to RJ45 Ethernet management port and, and the other end of the Ethernet cable to the switch.
3. Plug one end of the power cord to the two power cord receptacles on rear of the NR330A-IP4 enclosure, and the other end of the power cord to the power outlets.

6. Quick RAID Setting

1. After you turn on the NR330A-IP4, there will be an IP address (e.g. 192.168.xxx.xxx) shown in the LCD on rear of the NR330A-IP4 enclosure.
2. Open the web browser (Internet Explorer...etc.), and key in the IP address shown from the LCD into the web browser, and press enter.
3. The entry screen of the web GUI will be shown. Then you key in the default user name and password. The default user name is: **admin**, and the default password is: **1234**, and then press **Login**.

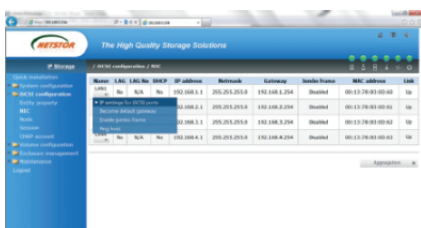


4. After you enter the web GUI, to perform a quick setup of RAID, click **Quick installation** at the top on the left side of the screen. Then you are able to select a RAID level (e.g. RAID 0, 1, 3, 5, 6, 0 + 1...etc.) for NR330A-IP4. After you have selected a RAID level, press **Confirm** to proceed to the next step.

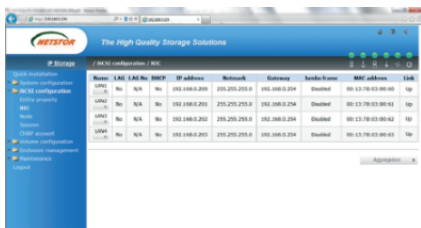


5. Information about the RAID level and the volume size that are going to be created will be shown on the screen. Press **Confirm** to finish the setup. After you press Confirm, the RAID level and the volume size will be created.

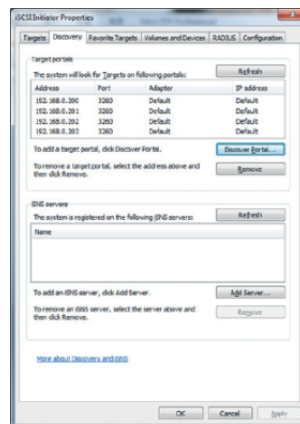
6. Click **iSCSI configuration**, and then click **NIC**. You will see LAN1, LAN2, LAN3, and LAN4 with its default IP address and Gateway address for your network environment, click **IP settings for iSCSI ports**, and key in the IP address and Gateway address, and then click Confirm.



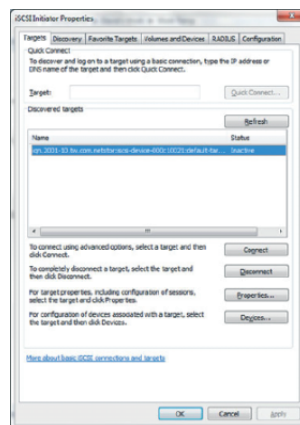
7. After the IP address and Gateway address have been changed, remember those addresses for iSCSI Initiator's **Target portals** in the **Discovery** section in iSCSI Initiator.



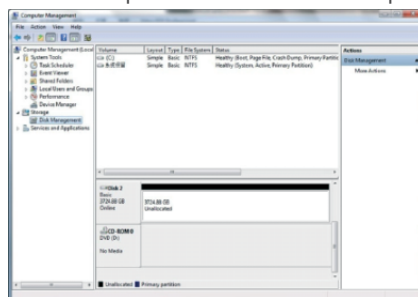
8. Open the iSCSI Initiator. Select **Discovery**, and then click **Discover Portal**. Key in the IP addresses shown from **iSCSI configuration > NIC** for LAN1, LAN2, LAN3, and LAN4.



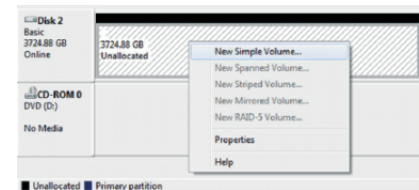
9. Select **Targets** in iSCSI Initiator. Click the item "iqn.2001-10.tw.com.netstor:iscsi-device-000c10021:default-target" shown in the Discovered targets, and then press **Connect**. The window of "Connect To Target" will pop up. Select "Add this connection to the list..." and "Enable multi-path", and click **OK**. After you press OK, the status of the item will become "Connected".



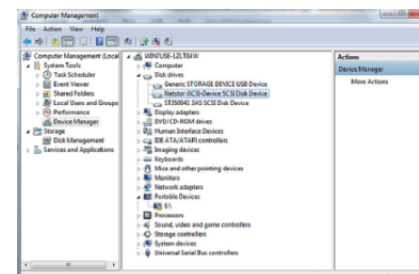
10. Right-click **Computer**, and select **Manage**. After the window of Computer Management shows up. Click **Disk Management**. The RAID volume (Unallocated) you created on NR330A-IP4 will be shown at the bottom part in the window of Computer Management.



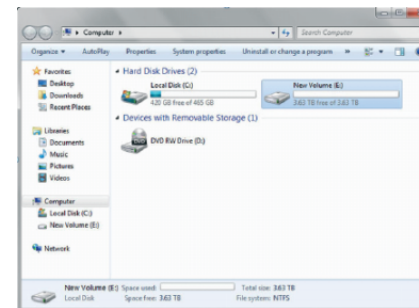
11. Right-click the RAID volume, and select **New Simple Volume Wizard**. Complete the steps shown in the New Simple Volume Wizard, and the RAID volume will be formatted.



12. Click **Device Manager** on the left side of the window of Computer Management, and then click **Disk drives**. You will see "Netstor iSCSI-Device SCSI Disk Device" (indicating NR330A-IP4) shown under "Disk drives".



13. Click **Device Manager** on the left side of the window of Computer Management, and then click **Disk drives**. You will see "Netstor iSCSI-Device SCSI Disk Device" (indicating NR330A-IP4) shown under "Disk drives".



For detailed configuration of NR330A-IP4, please refer to NR330A-IP4's user's manual.

If you have any questions, please contact your regional distributor, or Netstor Technology, Taiwan.

NETSTOR Netstor Technology Co., Ltd.

6F, No. 1, Alley 16, Lane 235, Baoqiao Rd., Xindian District, New Taipei City 231-45, Taiwan, R.O.C.

Tel: +886-2-2917-1500 Fax: +886-2-2918-1260

E-mail: sales@netstor.com.tw